



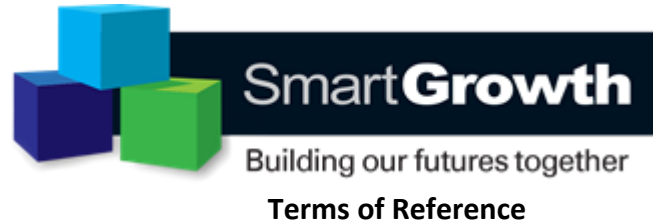
SmartGrowth Environment & Sustainability Forum

School House, Historic Village, 17th Avenue, Tauranga

Agenda

Tuesday 19 September, 2017 1.30 – 3.30pm

1. Apologies	Chair
2. Minutes and Actions from the previous 18 July 2017 meeting (<i>Paper A</i>)	Chair
3. System Design Team from NZTA: Te Tumu and Tauriko West update and presentation	Mark Haseley - NZTA
4. Further Transport updates	Glen Crowther
5. Te Tumu and Tauriko West Structure Planning meetings (<i>Paper B</i>)	Jo Wills/James Hughes
6. SmartGrowth Forums Independent Health Check research report and recommendations http://www.smartgrowthbop.org.nz/media/1887/smartgrowth-report-july-2017.pdf Suggestion for another structure (<i>Paper C</i>)	Chair
7. Watching Brief update (<i>Paper D</i>) General Business and Key Message for SLG	All



1. Membership Criteria

The Environment and Sustainability Sector Forum is intended to be a voice for the non-government and not for profit sector. Other organisations and government agencies are welcome to attend as participating observers.

2. Purpose

The purpose of the Environment and Sustainability (E&S) Sector Forum ('the forum') is to draw on existing experience and to positively contribute to the on-going evolution and success of the SmartGrowth Strategy ('the Strategy')

The forum will provide a view that reflects the interests of E&S groups across the wider western Bay of Plenty.

The forum will enable E&S groups/organisations and the sector industry direct participation in the strategy implementation and monitoring in order to provide vital sector input, in collaboration with the strategy partners and lead agencies into the wide range of challenges faced in the sub-region, including specific input into:

- Sustaining and improving the environment.
- Building the Community
- Urban form and design
- Housing affordability
- The contribution of the E&S sector to economic growth and wellbeing of the people.

3. Role

The Forum will have on-going input into the Strategy development and implementation including the following specific aspects:

- Providing input and feedback in respect of partner projects relating to strategy actions where such input is sought by the SmartGrowth Strategic (Managers) Group (SSG) particularly with regard to sustainable development/management considerations
- Monitoring of relevant strategy actions.
- The development of statutory and non-statutory policies by the SmartGrowth Partners that either arise from the strategy or have the potential to impact on the strategy.
- SmartGrowth representations to regional and national forums and central government.



- Using the grassroots knowledge of the forum to alert SmartGrowth to emerging environmental matters and sustainability developments that may impact on SmartGrowth policy and direction.

4. Membership

The forum membership is representative of the wider community within the western Bay of Plenty and currently has representation from the following organisations:

- Papamoa Progressive Association
- Master Painters BOP
- Sustainability Options
- Sustainable Business Network
- Envirohub
- Waiariki BOP Polytechnic
- Tauranga Carbon Reduction Group
- Surf Break Protection Society
- Maketu Ongatoro Wetland Society
- Uretara Estuary Managers
- The Rock – Papamoa Community Garden
- Friends of Puketoki and Friends of the Blade
- Welcome Bay Community Centre
- Otanewainuku Kiwi Trust
- Aongatete Forest Restoration Trust
- Federated Farmers
- Fruit Growers Association
- New Zealand Planning Institute
- Royal Forest and Bird Protection Society of NZ
- Te Puke Environment Forum
- The Rock – Papamoa Community Garden
- The Sustainability Society



5. Other SmartGrowth Forums and the SmartGrowth Strategic (Managers) Group (SSG) – Linkages and Reporting

In order to provide transparency, a member (an alternate can be appointed) of the other SmartGrowth Forums and the SSG (as selected by those groups) will be invited to attend and participate in the E&S Sector Forum meetings. The E&S Sector Forum may also appoint a member to attend and contribute to the wider Strategic Partner Forum. Meeting minutes and reports from each of the SmartGrowth Partner Forums will be made available to the other forums, to SSG and to SLG.

6. SmartGrowth Leadership Group (SLG) – Linkages and Reporting

The forum members are able to present to the SLG at any of the formal meetings with agreement of SLG Chair and at any agreed workshops, held between SLG and the forum. Annually SLG hosts a workshop with the forum (or combined with other forums) to discuss a range of matters and issues. The minutes of the forum meetings are provided to SLG as part of the regular reporting process and any particular issues are drawn out and highlighted in the bi-monthly report presented to SLG by the Independent Chair, Implementation Manager and Strategic Advisor.

7. Information Provision and Feedback

Relevant draft reports, ideas, submissions, and proposed initiatives are provided to the Forum for discussion and input prior to matters going to SLG for decision-making. These may be part of a meeting agenda item, or if between meetings, circulated by email to the Forum Chair, for feedback. This feedback will be presented to SLG.

8. Meetings Attendance and Presentations

The Independent Chair, Implementation Manager, Strategic Adviser and Well-Beings Implementation Officer may attend meetings from time to time, provide written reports, advice and seek input on various matters. SLG members may also be invited to attend the Forum from time to time.

Frequency - The Forum will meet bi-monthly, prior to the SLG meeting to provide information and feedback on specific issues directly relating to Strategy implementation.

Servicing - The Forum will be serviced by SmartGrowth through the Implementation Manager, for matters including venues, agenda circulation, minute-taking and report materials.

Chair - A chair will be appointed by the Forum

Environment and Sustainability Forum (E&S Forum) – Membership

Current Members	Representation
Jo Wills (Chair)	Sustainability Options
Buddy Mikaere	Combined Tangata Whenua Forum
Eddie Orsulich	Aongatete Forest Restoration Trust
Ian McLean	Toi Omohai
Mary Dillon	Envirohub BOP
Barry Roberts	Federated Farmers of New Zealand
John Garwood	Fruit Growers Association
Julie Midson	Kaimai Settlers Association
Julian Fitter	Maketu Ongatoro Wetland Society
Riki Nelson	Master Painters BOP
Cole Burmester	Triathlon Tauranga
Hans Pendergrast	Otanewainuku Kiwi Trust
Paul Hickson	Surf Break Protection Society
Glen Crowther	Sustainable Business Network
Gray Southon	Tauranga Carbon Reduction Group
David Hursthouse/Callum Barnett	The Rock – Papamoa Community Garden
James Hughes	The Sustainability Society
Lawrie Donald	Uretara Estuary Managers
Dean Tully	Toi-Ohomai Institute of Technology



Mel Arnold	Toi Te Ora – Public Health Service BOPDHB
SmartGrowth Partner Staff	
Michelle Elborn	Tauranga City Council
Glenn Ayo	Western Bay of Plenty District Council
Janie Stevenson	Bay of Plenty Regional Council
Stephanie Macdonald	Bay of Plenty Regional Council

Environment and Sustainability Forum
Tuesday 18 July 2017, 1.30-3.30pm
School House, Historic Village, 17th Avenue

Forum Members Present	Jo Wills (Chair/Sustainability Options), Eddie Orsulich (Aongatete Forest Restoration Trust), Paul Hickson (Surf Break Protection Society), Julian Fitter (Maketu Ongatoro Wetland Society), Kair Lippiatt (Royal Forest and Bird Protection Society of NZ), Mary Dillon (Envirohub), Gray Southern (Carbon Action Group), Glen Crowther (Sustainable Business Network), Buddy Mikaere (Combined Tangata Whenua Forum)		
SmartGrowth	Karen Summerhays (People+Place/SmartGrowth), Megan Rumble (Coordinator)		
Other			
Partner Staff	Michelle Elborn (Tauranga City Council), Glenn Ayo (Western Bay of Plenty District Council)		
Apologies (forum members)	James Hughes (The Sustainability Society), John Garwood (Fruit Growers Association) Julian Fitter (attended later), Buddy Mikaere (lateness)		
Previous minutes and matters arising		The minutes of the 23 May meeting were accepted as a true and correct record Moved Mary Dillon, Seconded Michelle Elborn	
		Previous actions - 23 May 2017	
	JAN	All Forum Members send Cycleways information to Glen Crowther - Ongoing	
	MARCH	Jo to provide MfE information regarding sea level rise in green/brown field developments as soon as it becomes public information - The sea level rise report is out in the public space although MfE have not released the report officially	
	MARCH	TCC to provide a timeline regarding opportunities for the Forum to be involved in the Structure Plan development in both Te Tumu and Tauriko west – To be addressed today	
	MARCH	Add TOR discussion to the next agenda - postponed at the request of the Chair	
	MAY	Glen Crowther is to contact Alistair Talbot (NZTA) regarding a representative to join the forum and let Jo know who to follow up - Action complete – Glen invited Alistair Talbot to attend today's meeting however he is prior engaged so will endeavour to attend next meeting	
	MAY	Members to send any specific questions about the IDC through to Jo Wills before the 19th of June, to present them to Che for answering - Action complete	
	MAY	Glen to compile a list of questions from Drivechange that would be of interest to the Forum members which will	

			be circulated asap - Action complete	
		MAY	Tauriko Subcommittee to be formed, Glen, Mary, James, Jo - Postponed at this stage while it is decided how to address this	
		MAY	Karen to obtain and share the timeline of engagement for Tauriko - Action complete	
		MAY	Julian to produce a brief Te Tumu think piece in preparation for the combined Forum Hui on the 28th June - Action ongoing	
		MAY	Karen to source laminated maps of Tauriko and Te Tumu - Jo to ask for the bigger picture map and look at TCC Smartzoom system	
		MAY	TCC representative to attend the next meeting (18 July) to get Forum input into the Environment Strategy - Action complete – Michelle is present today	
		JUNE	All members to provide SmartGrowth indicator report feedback to Jo by 9 th June - Action complete	
Watching Brief - Chair's report/Members watching brief - Member updates how do we want to do this in the future? - Transport update - Cycle Action Plan / PT Blueprint	Update/ Discussion	<p>Jo introduced the Chair's report and Members watching brief. The purpose of this document is to keep members of the forum informed across the huge scope of projects relevant to the forum. This is a way to keep everyone up to date, identify leads and the forums position. This is also a way of keeping the SLG updated with all of the forums projects and roles. The idea is that forum members feed into this document. This document will also help to identify gaps. One obvious gap already is the Infrastructure Development Code with no one from the forum taking the lead on that yet.</p> <p>Jo welcomed feedback. Forum members felt this was a clever idea and well worthwhile. It was noted that when attending various meetings it is more about feeding back to the forum rather than members taking the opinion of this forum out to the meetings they attend. Forum members agreed they are happy to update the document in their area of expertise before each bi-monthly meeting. It was suggested that something like a google doc would work best given multiple people will be making updates. It was agreed that this document would be updated prior to the upcoming chairs structure planning design workshop.</p> <p>Glen Crowther provided a brief transport update noting that there is a lot happening in this space. It was raised at one of the meetings that there seem to be a big gap between what councillors, community and consultants are saying. Glen saw positive signs within TCC around community engagement with NZTA also showing that they strongly value community engagement. It was noted that there are many stakeholder engagement projects happening at present. Michelle Elborn confirmed the community engagement team did try to look at the amount of different community/stakeholder engagement projects going on but nothing has come from that as yet.</p> <p>Discussion followed with concern around timing of community/stakeholder engagement in line with decision-making. The forum also discussed in depth how essential it is to know how they can influence decisions specific to transport but also in all areas and if at all.</p>		

	ACTION	<ul style="list-style-type: none"> - Glen to keep the forum up to date around public consultation dates. - Forum members to note the Tauranga Transport Programme public consultation date in late august.
Review of the TCC Infrastructure Development Code (IDC)	Update/ Discussion	<p>Karen highlighted the paper which shows how quickly this is moving. In depth discussion followed around what influence the forum can have on this. The question was asked if the IDC will have sustainable options within it. It is essential to know a clear progression of what consultation influences what. It was agreed Jo will speak about this during the chair section of the next SLG meeting.</p> <p>POST NOTE: Jo Wills has received considerable information from Christine Jones about the IDC process and Projects and is meeting with Che Hedges 10.30am 27 July and will report back to members after.</p>
	ACTION	Jo to present to the group at the August SLG meeting.
TCC Environment Strategy - What/Why/How session	Discussion	<p>Michelle Elborn from TCC was present and spoke about the TCC Environment Strategy. She noted that the reason we need this strategy is so very evident here at this meeting. TCC now have an environment committee who approved the development of this strategy. The committee are looking to have the strategy signed off around March 2018. This focusses on the natural environment. Michelle gave an overview of the development of the strategy.</p> <p>Michelle noted the online survey seeking thoughts and views on the current environment state within Tauranga and encouraged forum members to complete this by 1 September https://www.tauranga.govt.nz/our-future/strategic-planning/strategic-focus/environment-strategy</p> <p>Michelle will attend E&S Forum meetings regularly and provide an update on this strategy.</p> <p>Questions and discussion followed including whether contaminated land and cross boundaries have been considered. Discussion was also had around input from central government.</p>
	ACTION	<ul style="list-style-type: none"> - Forum members encouraged to complete the TCC environment survey by 1 September https://www.tauranga.govt.nz/our-future/strategic-planning/strategic-focus/environment-strategy - Michelle Elborn to provide a regular update at future forum meetings.
Position Paper checklist and hui update WBOPDC Response	Update	<p>It was noted that the checklist is being updated with the feedback from the combined hui however there is no timeframe for this at this stage.</p> <p>Questions arose around how the checklist will be used:</p> <ul style="list-style-type: none"> - Will there be a formal process whereby forums will get to comment and review responses? - Who will be responsible for delivering these actions and how will this be monitored? - Each of the measures in the spreadsheet may need review again to ensure they are actionable

	ACTION	<p>Jo to take these questions back to SmartGrowth and provide the forum with the response.</p> <p>POST NOTE:</p> <p>Jo has received a response to the above questions, the suggestion was that we are free to use the checklist in its current form and nothing would be operationalised until it has been reviewed, tested and put in front of the SLG for approval. Jo's response was that we really need to gain strong buy in from elected members now and would not be using it in its current form given the huge amounts of work it requires. It was agreed that SmartGrowth would canvas this with elected members.</p>
Structure planning process and engagement for Te Tumu and Tauriko	Update	<p>At the recent joint hui it was announced there would be scheduled touch points for forums to engage on structure planning. Three design workshops are planned with forum chairs in August, September and November followed by an open day.</p> <p>It was agreed that Jo will query the following:</p> <ul style="list-style-type: none"> -What resource will be available for the workshops? -What level of detail will be required? And; -Can we receive the workshop content beforehand? <p>The forum members agreed it would be very beneficial to meet again prior to the workshop IF they are able to receive the content sooner given this structure planning needs entire forum input not just input from the chair.</p> <p>Jo will also suggest the initial workshop is a combined hui OR if this is not possible suggest the forum have the freedom to nominate subject matter expert to attend.</p>
	ACTION	<p>Jo to feed forum questions back to SmartGrowth/TCC around the structure planning design workshops.</p> <p>POST NOTE: Done, urgent forum meeting taking place Thurs 27 July to begin preparations for design workshops.</p>
E&SF suggestions to SmartGrowth Indicator list	Update	<p>Before the joint hui Jodie and Mary sat down and compiled the draft indicator list from the E&S Forum point of view. Jo has been advised there is no timeframe for this. Jo asked the forum for their review and input into this.</p>
	ACTION	<p>All forum members to review indicator list before the next meeting.</p>
SG Update: - SmartGrowth Partnership Report - SLG meeting June 21	Update	<p>SmartGrowth Partnership Report - SLG meeting June 21</p> <p>For members to read: http://www.smartgrowthbop.org.nz/media/1846/smartgrowth-partnership-office-bi-monthly-report-june.pdf</p> <p>Lakes review project – Jo will email an update to the forum.</p>

- The Lakes Review project – update from Chairs meeting		
		Jo to email The Lakes Review project update to the forum.
General Business	Discussion	<p>Karen departed the meeting at 3.17pm. Jo thanked Karen and noted how much of an asset she has found Karen to be to the E&S forum. The entire forum thanked Karen for her support and work.</p> <p>Discussion was had around the forum review.</p> <p>Jo has just returned from the ECOCITY World Summit and will send around her key learnings and take out document. One thing that came through strongly was that a genuine partnership between council and community is essential. Jo spoke about the beyond zero emissions session which was so beneficial. Jo will present to SmartGrowth on the findings from this summit. The community sector was represented by about 20% at the summit with the rest being planners, politicians, engineers etc.</p>
	ACTION	Jo to circulate her Eco City Summit key learnings and take out document to the forum – attached with minutes.
Recommendations to SLG		<p>The E & S Forum is engaged across a wide range of activity in the district, which is now being captured and documented for the Forum's bi-monthly meetings and will be presented for inclusion in the LG reporting. The purpose of capturing this information is manifold, but for the LG, it is to demonstrate the environmental and sustainability touch points for SG planning and development processes. It highlights the position of the forum relevant to each issue, as well as bringing attention to the breadth of knowledge and expertise within the forum. It is the forum's expectation that there will be meaningful engagement throughout all SG processes, as per our forum's scope, and that the forum members will add value through the utilisation of member's expertise and connections. We trust the addition of our bi monthly activity report will aid LG members to support inclusion of the E & S forum in decision-making processes.</p>

Meeting closed 3.40pm. Next meeting Tuesday 19th September 2017 1.30-3.30pm, School House, Historic Village, 17th Avenue.

Environment and Sustainability Forum Outstanding Actions

1.	January	All Forum Members send Cycleways information to Glen Crowther - Ongoing
2.	March	Add TOR discussion to the next agenda - Postponed until July at the request of the Chair

3.	May	Tauriko subcommittee to be formed, Glen, Mary, James, Jo - Postponed at this stage while it is decided how to address this
4.	July	Glen to keep the forum up to date around public consultation dates.
5.	July	Forum members to note the Tauranga Transport Programme public consultation date in late august.
6.	July	Jo to present to the group at the August SLG meeting.
7.	July	Forum members encouraged to complete the TCC environment survey by 1 September https://www.tauranga.govt.nz/our-future/strategic-planning/strategic-focus/environment-strategy
8.	July	Michelle Elborn to provide a regular update at future forum meetings.
9.	July	Jo to take these questions back to SmartGrowth and provide the forum with the response. POST NOTE: Jo has received a response to the above questions, the suggestion was that we are free to use the checklist in its current form and nothing would be operationalised until it has been reviewed, tested and put in front of the SLG for approval. Jo's response was that we really need to gain strong buy in from elected members now and would not be using it in its current form given the huge amounts of work it requires. It was agreed that SmartGrowth would canvas this with elected members.
10.	July	Jo to feed forum questions back to SmartGrowth/TCC around the structure planning design workshops. POST NOTE: Done, urgent forum meeting taking place Thurs 27 July to begin preparations for design workshops.
11.	July	All forum members to review indicator list before the next meeting.
12.	July	Jo to email The Lakes Review project update to the forum.
13.	July	Jo to circulate her Eco City World Summit key learnings and take out document to the forum – attached with minutes.

Te Tumu Structure Planning 16th August, 2017

- content of table was discussed at meeting and sent to Cam afterwards with a request to pass on to the RPS consultants who attended)

Structure planning issues	E & S position statement
Land use – development type, density and staging	<ul style="list-style-type: none"> • Environmental lens to be applied to place shaping allowing for place making • Integration of urban form and transport planning critical to ensure connectivity to amenities, workplaces etc via AT, limiting need for car travel, prioritising walkability, car free community spaces, cycle friendly zones – all connected, all ages • PT routes identified to support car free travel to outer hubs (centre to centre), linked to AT • Planning for private/public EV charging stations • Development type and density to prioritise access to green space (300m walk from residential to green space, allow for community gardens) • Residential land use observes North facing development • Mixed typologies and tenure allowing for stronger community cohesion
Transport and connectivity	
Infrastructure (including stormwater, water, sewerage)	<ul style="list-style-type: none"> • Natural management of stormwater with multiple functions (active recreation, biodiversity, gardens). • Permeable surfaces, swales, green roofs • Use of wetlands to manage/treat stormwater • Better onsite residential collection & management (<i>NB: more concentrated rainfalls</i>)
Integration of new development with existing infrastructure and existing urban development	<ul style="list-style-type: none"> •
Landscape character and amenity	<ul style="list-style-type: none"> • Deliberate preservation of habitat with high ecological value (supports biodiversity, ecological corridors, historical value) • Accessibility to wetlands, river, ocean prioritise integrity of ecosystems • Cultural and historical sites recognised and protected • Development and stabilisation of dune system (Tsunami protection, holds back wind-blown sand etc) • Land to sea view shafts and accessibility protected
Reserves and open space networks	<ul style="list-style-type: none"> • Provision for nature based community spaces • Equal distribution of green space, with provision to adapt to community needs i.e. community gardens • Grass reserves positioned away from waterways, or with natural filtration systems to avoid sediment run off
Natural Hazards	
Community facilities	<ul style="list-style-type: none"> • Facilities prioritise connectivity through AT and PT

The protection of sites, features or values	<ul style="list-style-type: none"> • Deliberate preservation of habitat with high ecological value (supports biodiversity, ecological corridors, historical value) • Accessibility to wetlands, river, ocean prioritise integrity of ecosystems • Cultural and historical sites recognised and protected • Development and stabilisation of dune system (Tsunami protection, holds back wind-blown sand etc) • Land to sea view shafts and accessibility protected
Areas of contamination	
Additional questions/comments (from James):	<p>- What does good urban design / density-done-well look like? What are the design guidelines/requirements? How is this mandated / incentivised / enforced? Can we have walk up houses (no driveways - e.g. like examples at sandhurst)? Multi storey? Street cross sections showing footpath/cycleway/road. My main concern is that the developers will control what housing typologies get built, and Council / community may have little influence over this.</p> <p>- What is the aspiration and design approach for retail and commercial areas? Push for integrated mixed use town centre, rather than a drive-in carpark mall situation like all the others</p> <p>- The 75% of people working in the area idea is a complete red herring. Get rid of that as it is distracting and means nothing. They need to design and protect public transport corridors to key employment centres (i.e. CBD)</p> <p>- Water sensitive urban design should be implemented - which you have covered</p>

Summary of notes taken during meeting:

Attendance:

RPS consultants from Brisbane (Peter Egerton and Matt Bolton)

Tauranga City Council (planning, parks & reserves, transport)

- Campbell Larking, Consultant Planner/Project Manager

- Andrew Mead

- Christine Jones

- Janine Speedy

- Graeme Jelly

- Clare Abbiss

Forum Chairs

Sarah Davey (in place of Bill Wasley)

15,500 population expectation, aiming for 7,700 dwellings, current density at dwellings per hectare.

Land owners:

Town centre already zoned and owned by [Bluehaven Management developers](#)

Town centre includes shopping centre/town square

[Carrus Group](#)/Hickson, residential model, land to market 15 – 18 dwellings, to be sold on open market, standard model – but shifting in idea of density (to higher density)

Entire coastal dune system held in private ownership – doesn't exclude public, only way to change ownership would be through Maori Land Court.

Fords, desire to deliver higher density, 35 dwellings per hectare, the wish to:

- retain ownership
- have a leasehold/re-development option (see email from Cam)
- retain all in large scale blocks for intergenerational development

TCC

- goal is to free up more land for development by filling in parts of flood plains
- dune system would stay in act
- sea level rise 1.2 – worst case modelling to 2130
- new land form support SRL predictions, tsunami, flowing (without impacting ecological areas)
- new ground levels (due to filling)
- stormwater network mix of underground and LID (swales, wetlands, ponds)
- aim is to not deliver dry ponds
- impermeable surfaces aiming for 100% industrial, 80% roads, 70% residential due to high water table so need to reduce amount of ground soakage (limiting LID)
- nurturing a relationship agreement with 3 main land owners
- Beca managing stormwater TCC project managers
- access to ocean will be via specific access areas, dunes will be fenced off

Other specific discussions:

- AT and PT within local community, to be more than purely recreational, needs to also provide for direct access to services for commuting/transport. Current cycleway to be along the river.
- town centre and industrial area didn't have allocation for green space (functional or recreational), it was recognised land use/reserve policy wasn't right. Agreement from RPS consultants to ensure accessible and functional green space needed to be included. Recommendations made for green space in medium to high density areas for community to decide on community gardens etc.
- concerns raised about large areas for sports reserve, located away from the proposed schools, and the lack of planning for the aging population within town centre and entire focus has been on tenancies.

Follow up queries from the meeting to Cam with responses:

Email to Cam from Jo, Cam's response in blue

- 1) You will ask the landowners for a meeting with the forum chairs to discuss issues, concerns & opportunities and let us know the outcome.

1. Yes, I will do this and let you know the response. I am thinking the invite could be to the next Forum Chairs design workshop in October.
- 2) There was talk about also meeting with the Blue Haven developers for a similar discussion, is this correct?
 2. Craig B (as Bluehaven's consultant) was going to raise future Chairs conversations with this client. This action did not sit with the Tauranga City Council.
- 3) Ownership of the Te Tumu Kaituna 14 and Fords land will be retained so will all be on a leasehold arrangement, can you please explain a more about what this means for development and for private purchase?
 3. We are working on a starting proposition of landowner aspiration, being retention of ownership so this project is proceeding on the majority of land which is constrained/set aside for reserve as not being held in public ownership or control. This would mean if access/infrastructure use were required lease arrangements would need to be entered into, unless otherwise vested. I note we have a long way to go with this concept, and it is relatively new so I am limited in what information I can provide you. Private development would be as per a normal leasehold arrangement (as we see across the City). How this applies to constrained/reserve land will need to be worked through as part of the delivery of the structure plan (once we have built that plan). Private development on leasehold land would be as per any lease arrangement developed by the landowner.
- 4) You mentioned Blue Haven and the Fords were working on a redevelopment basis, so build, and rebuild in a 30 - 50 year time frame - do I have this correct? I am struggling to understand the reasoning behind this due to the significant amount of waste resource this approach generates and the lack of vision. Maybe I misheard.
 4. The Fords have a desire to provide for density within their development and that the development is intergenerational. For them, providing for density includes redevelopment as 2nd generation development. How this roles out will be up to them, as the Council's role is to provide for the infrastructure provision to enable growth to proceed. I believe their concept is in its infancy, and will be worked through as development progressing – however providing for 2nd generation development is a principal they are working under and enabling for that to occur.
- 5) I understand the water table is quite high and the implications of this around permeable surfaces, but I am concerned about the impact this will have on residential development, we already have major moisture issues from properties built close to water tables - is this being considered?
 5. Yes, the groundwater table is high. As part of our working, we are factoring this in and looking to create a clear separation between the groundwater table and the ground level. We are not looking to create dwellings in areas which results in moisture issues.
- 6) I raised the question about typology and principles for residential development to support better performance outcomes - can you confirm the only way for TCC to address this is for a policy change which would need to be city wide (if so, what is the process for this) - I am very keen to speak to the landowners to understand the principles they will be applying to density. You mentioned some are already well advanced in their thinking, it would be helpful to better understand this.
 6. TCC has taken on the stance of enabling development to proceed, and not limiting density or typology at this early stage. We would look to do this through creating enabling planning framework, as we have sought to do through the current plan change 25 for Wairakei. Rule development is not set to occur until next year, so our position on conceptual.

7) Finally, something I didn't get the chance to raise at the meeting, you mentioned residential development will come before employment, so what is being planned to move people in and out of Te Tumu and into Tauranga for work, school, and entertainment (all ages, all time of day/night) via PT instead of individual vehicle use. We don't believe in the 75% live, work and play aspiration.

7. We are doing a range of transport modelling to understand effects on the transport network using a range of population scenarios (15,500, 20,000 and 25000), noting these populations are final build out. We are also engaging with BOPRC on bus route planning. We have yet to begin transport modelling, so I have nothing to share with you. We are preparing the scope for running the Tauranga Transport Model.

Next Steps:

Tauranga City Council will share any information at the next workshop with the Forum Chairs which will be set up early Sept to occur in early October.

Land owners have been invited to attend the October meeting

Tauriko

(attendance: James Hughes, Mark Wassung Carol Gordon, Jeff Fletcher?, Phillip Martelli, Christine Jones, Cam Larking, Andy Mead, Parks Manager, Joe Metcalfe, NZTA rep, TCC Transport (Bruce) , Studio Pacific (landscape designers)

TCC wholly responsible for structure plan

1/3 vs 2/3 of land currently in TCC/WBOP – boundary adjustment is underway

3000 people approx. – expecting low density of around 15 dwellings/ha. But will be enabled to provide more. Tauriko School will be getting moved. Still confirming where this will go to.

Highway will be 4 lanes like TEL – with only 2 or 3 access points. This will be ‘cut-down’ and over bridges used to get from Tauriko Lakes to Tauriko West

Constraints: These are significant and include flooding, peat, unstable land, steep land. As a result, major infill earthworks required within the valley floor. The scenario used for setting floor levels has been 1 in 100 yr rainfall (incl climate change) plus 1m of freeboard

Importance of the river was discussed. This is an ongoing discussion with Iwi and will basically be the focal point of the development

Walking and cycling infrastructure will be provided, however it was mentioned that the topography will probably mean most people will use their cars (it is steep). I suggested one of those bicycle elevator things they have in Norway (<https://www.youtube.com/watch?v=7j1PgmMbug8>) .

3 developers own the land. It is unclear (unknown) whether these developers will actually build the houses or just provide vacant lots

The structure plan may provide strict guidance on sw approaches, but this is still being worked through – needs clarification

In terms of density - this was discussed at length. TCC have no appetite to regulate for density, and therefore it will be left to the market. This needs further discussion I think, as the remaining avenue is to engage and collaborate with the developers in some form. Also in my mind - if they are heading down the path of very small lot sizes this may lead to poor outcomes – if they are building single storey houses. Equally you don’t want large lot sizes with single dwellings.

I mentioned that there was a view among some forum members that the latest developments in Tauriko and Wairakei have been pretty average. They really want to clarify this and get the forum to explain what we mean.

Mark W pushed back on the whole plan – and asked if they had looked at simply intensifying on the flatter (higher) areas and not going to the expense of all the earthworks. They hadn’t looked at this.

Council have significant costs in providing infrastructure to the edge of the development. Then the developer builds everything within the site. Council then takes over the maintenance of this.

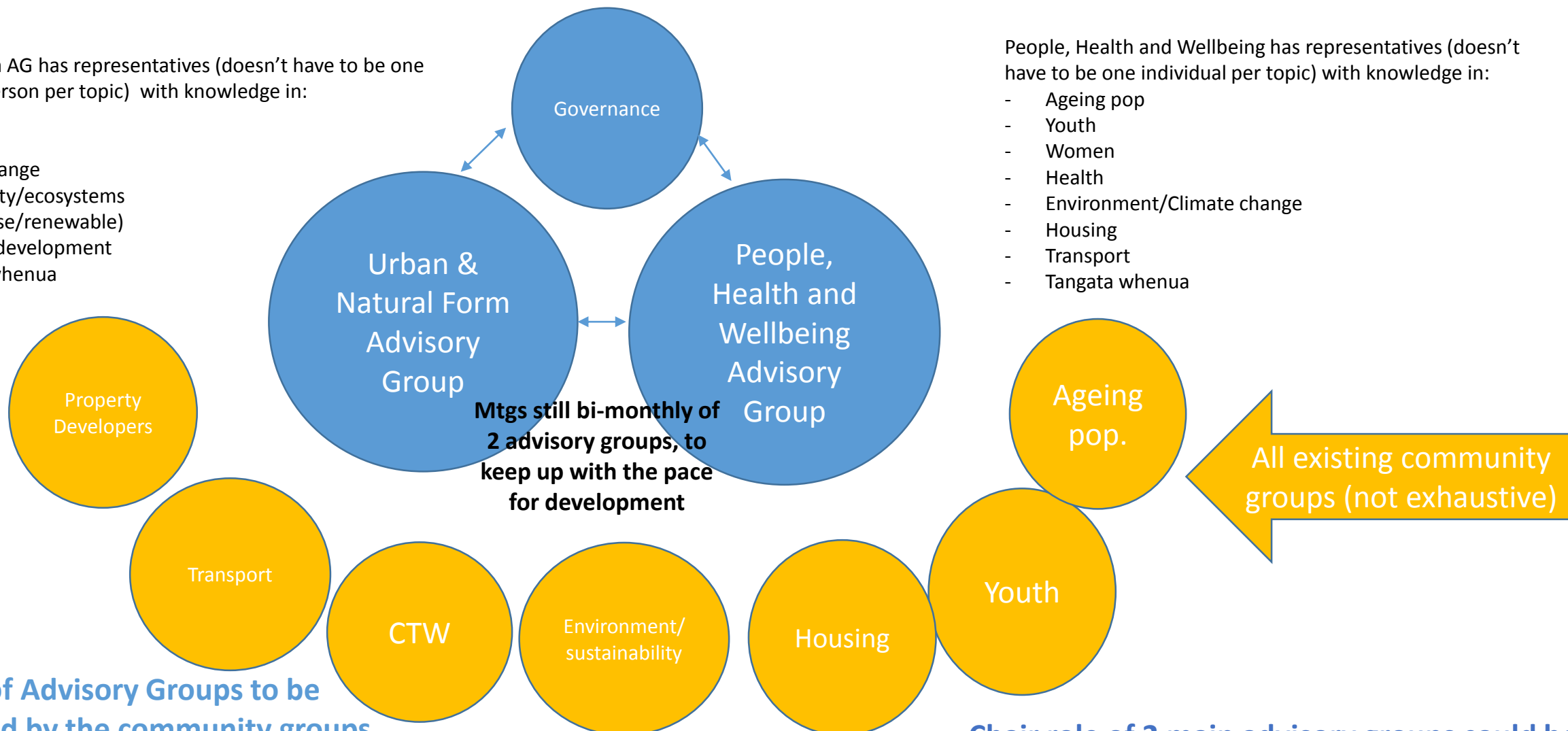
Paper C

Urban forum AG has representatives (doesn't have to be one individual person per topic) with knowledge in:

- transport
- Housing
- Climate change
- Biodiversity/ecosystems
- Energy (use/renewable)
- Property development
- Tangata whenua

People, Health and Wellbeing has representatives (doesn't have to be one individual per topic) with knowledge in:

- Ageing pop
- Youth
- Women
- Health
- Environment/Climate change
- Housing
- Transport
- Tangata whenua



Make up of Advisory Groups to be determined by the community groups, and representatives nominated (not chosen by council or SG), community representation should be stronger than council participation – needs management AND staff involvement

Makes sense to me that these groups already exist? So why duplicate i.e. TGA Carbon Reduction Group, EnviroHub, Bike Now, Youth groups, health etc – so instead of creating new groups, provide direct channels of communication between them and the Advisory Groups through open forums, paper discussions, reports etc

Chair role of 2 main advisory groups could be shared by 2 people (ideally still from the community), they would be part of the governance group and sit in on all advisory groups meetings so there is connectivity between the conversations.

E & S Forum watching brief for meeting 18th July (updated 27th July)

Current regional activity – all members				
Area of focus	Update	Agreed Actions	Forum members actively engaged	Agreed Forum position
Environment Strategy (TCC)	Chair has met with Celia Walker about the process the TCC Environment Committee will be taking for strategy development. Michelle Elborn has presented to Forum.	Support this work by engaging with TCC staff on strategy development, interviews currently taking place with forum members and online survey has gone out. Strategy updates/exercises will have regular place on forum agendas.	All	Refer to position statement for key areas of the strategy: natural environment, resource efficiency, water, climate change, air quality

Te Tumu/structure planning	<p>Organising a meeting with the Fords</p> <p>Also, see directly below for reference to design workshops</p>	<p>JF to arrange meeting with Geoff & Dianne Ford. Email sent 07/07/17</p>	<p>Julian, Jo, Glen, Paul, James +</p>	<p>Aim is for deliberate preservation of habitat with high ecological value. Good protection/use/creation of dunes and wetlands. Desired outcome is for Ramsar Site on Lower Kaituna and Maketu & Waihi harbours, this affects any plans for second bridge across the Kaituna. Bridge could have detrimental impact on wetlands and surrounding area. More information required.</p> <p>Structure planning needs to start with integrated discussion about urban form/place shaping and transport to encourage good place making.</p>
----------------------------------	--	--	---	---

<p>Tauriko West/Structure planning</p>	<p>(Received from Christine Jones via email 21/7/2017)</p> <p>The proposal for engagement is likely to run similar to the below:</p> <ul style="list-style-type: none"> • Workshop 1 – Introduction to the Te Tumu & Tauriko West Project – undertaken • Workshop 2 – Chairs: Specific design discussion with TCC staff/master planners. The purpose of this is to enable the Chairs to directly discuss the matters raised in the position papers and how they see these being implemented through the structure plan design process. It is likely that a workshop would be help for each Growth Area, with these occurring in August (dates yet to be set). • Workshop 3 – Chairs: Specific design discussion with TCC staff/master planners. The purpose of this is to outline how the matters raised in the position papers has been considered through the design process and discuss outcomes of that. It is likely that a workshop would be held for each Growth Area, with these occurring in November (dates yet to be set). 	<p>Dates of design workshops yet to be confirmed.</p> <p>Pre-workshop forum meeting held to discuss structure planning components 27/7/17</p>	<p>Mary, James, Glen, Jo +</p> <p>Chair to attend design workshops, based on forum members input.</p>	<p>Structure planning needs to start with integrated discussion about urban form/place shaping and transport to encourage good place making.</p>
--	--	---	---	--

	<ul style="list-style-type: none"> • Workshop 4 – Presentation on the outcomes of the structure planning process, with these occurring in February/March (dates yet to be set). <p>Likely agenda: Introductions; Project overview; Existing key inputs known (what we know what we are already working with):</p> <ul style="list-style-type: none"> - Landscape/Ecological/Natural Character Studies/Arch/Natural Hazards; - Infrastructure Planning; - Levels of Service; - Commercial/Employment Projection - Existing consents in place. - Forum Position papers <ul style="list-style-type: none"> o Key Issues to be considered in the design process; o Options to incorporate into design process; o Potential for further work required. 			
--	---	--	--	--

<p>Environment Committee (TCC)</p>	<p>Biosolids: they have deferred the Biosolids decision for a few years meaning the sludge will continue to go to Landfill in the meantime. The Council staff didn't go into details of the options that they listed as : -</p> <ul style="list-style-type: none"> • solar Drying • thermal drying • aerobic digestion (<i>which to me seems the most environmentally friendly</i>) • vermi-composting • incineration <p>The problem from their point of view that there appeared to be no long term viable buyer for the end product (where there was one), and the costs were high. Could possibly be used for native forest regeneration on non Maori land, as they have avoided getting involved so far.</p>	<p>Ongoing attendance at committee meetings by forum members as available with reporting back when appropriate.</p> <p>Bio Solids: Interested in seeing more detail on those options, John will write to council and ask for detail if agreed by forum to pursue.</p>	<p>John, Mary, Jo, Glen, Gray</p>	
------------------------------------	---	---	--	--

Cycle Action Plan (TCC)	<p>Forum members have attended two stakeholder workshops led by TCC staff member Mathew Stewart. Purpose of workshops has been to test and review the principles, priorities and community engagement process for the CAP. Community engagement process to happen prior to submitting CAP (with projects) to LTP.</p>	<p>Mathew is managing this and has been feeding back updates as more workshops take place.</p> <p>Additional meetings taking place in Aug with forum attendance.</p> <p>Next step for forum would be to engage as part of the community consultation process to support CAP funding in LTP.</p>	Jo, Glen, Gray, James, John	<p>Cycling needs to be:</p> <p>Safe</p> <p>Connected</p> <p>Prioritised</p>
-------------------------	---	---	------------------------------------	---

Regional Land Transport Plan (all councils and NZTA)	Have provided input in to creation of the problems, benefits and measurements/indicators for the LTP	BOPRC develop Regional Land Transport Plan from “bids” by councils for transport funding. These are finalised by 30/4/18 and sent to NZTA for consideration for funding.	Glen (SBN), supported by James and Jo	<p>a) High quality transport planning including destination planning, with well-connected, accessible and safe cycleways and walkways, together with public transport, enabling a shift away from car dependency</p> <p>b) transport planning should deliver to quality of life and low carbon transition as key priorities</p> <p>c) need to include rail or provide for it in future via corridor</p>
B2B (NZTA/TCC)	Ongoing engagement with NZTA around B2B project in conjunction with other cycling initiatives and plans.	Aim is to liaise with TCC to link B2B and TCC cycleways.	Glen, Jo, James	See above

Western BOP Public Transport Blueprint (BOPRC)	Community engagement got a lot of feedback, with a lot of opposition to scrapping school buses and some support for new initiatives.	BOPRC has decided to delay decision about plan for buses by 6 months, so new services will start beginning of 2019 rather than July 2018.	Glen	Public transport needs to be: Connected Reliable High frequency Safe Prioritised Affordable and integrated as part of a broader transport plan to enable a shift away from car dependency Rail needs to stay on the table.
Smart Transport Forum (SBN, SmartGrowth, Chamber, P1)	Event to focus on key transport issues in Tauranga-WBOP.	Glen is working with others to develop programme for this event, which looks likely to happen mid-September.	Glen	See above

Tri-Council meeting	The Tauranga Carbon Reduction Group has organised a meeting TCC, BOP and WBOPDC to present the case for climate change mitigation (and adaptation) to be prioritised in the LTP (focusing on co-benefits of specific outcomes).	Presentation has been forwarded to E & S forum, next steps are to determine a course of action and lead group (among 3 councils).	Glen, Gray, Michelle, James, Jo	<p>Carbon reduction target and timeframe needs to be determined.</p> <p>From Position paper: A regional approach is required for:</p> <ul style="list-style-type: none"> i. Mitigation: Ambitious greenhouse gas reduction targets consistent with national and international targets to keep global temperature increase below 2 degrees C need to be established and implemented through a robust action plan to reduce emissions. ii. Adaptation: A comprehensive community adaptation plan needs to be developed to understand, prepare for, and respond to the risks and impacts of climate change, such as sea level rise and increased severity and frequency of storm events.
---------------------	---	---	--	---

Eco-City World Summit	Chair attended 3 day world summit 12 th – 14 th July in Melbourne	Chair to report back to SG leadership group, other groups and forums as invited. Notes and key learnings have been sent to forum members for use as they see fit 27/7/2017	Jo	
Transport Committee (TCC)	Ongoing focus on Tauranga Transport Programme (TTP) Business Case.	Upcoming community engagement around TTP, plus ongoing strategic transport discussions by this committee and SG Leaders' Group.	Glen	
City Transformation Committee (TCC)	Jo, Glen and Gray have met with Larry, Jo made request to speak to committee about position paper re urban form	Chair to attend next meeting and arrange via Larry to speak	Jo, Glen, Gray, Mary	Good urban form/place shaping and transport needs to be integrated to encourage good place making.
IDC review	Jo and Glen met with Che 27/7/17 to gain better awareness of the forums opportunities to influence any decisions in the IDC review. Current review less relevant than upcoming projects.	Forum to be invited to participate in 'Project 2 Workstream – High Density Development/Intensification issues' SG has been identified as a stakeholder.	All	Key areas: transport, lighting, stormwater management

Methyl Bromide	<p>There is a community group (Community Fumigation Action Group) that is lobbying the Port, Genera and the Regional Council for the removal, reduction, reuse, recapture of the use of Methyl Bromide. The Port of Tauranga hosted a tour and a Q&A session for the members of the Community Fumigation Action Group. Representatives have met with reps from the BOPRC and from that a list of tasks to be undertaken has been developed.</p>	<p>The group will meet and discuss next steps and continue to keep the pressure on so that the recapture targets set in the Genera consent are met... heading to 100% recapture by 2020 if not before then.</p>	Karen, Glen, Mary	
EnviroHub	Update to come	E & S forum aligned to Envirohub	Mary	
Surf Break Protection Society	<p>SPS is actively involved with issues affecting surf breaks and the marine environment but land based activities, harbour wellbeing etc are interconnected.</p>		Paul	<p>Harbour and Ocean – protection and improvement of marine environment – which provide biodiversity, food sources, recreational activities and visual appeal/tranquillity. Outcomes must be consistent with the BOP Regional Council Coastal Environment Plan.</p>